

Chairpersons Report—Penny Stephens



It has been another challenging year where funding is always at the forefront of our minds but despite this, we have managed to provide support and services to numerous families. All Family Support Coordinators continued to manage the many referrals that are received and families have been provided with their support throughout the year. We also continue to run two very successful Family Groups in both Dover and Deal.

During the year we have had staff and trustee changes and sadly Tracy our Scheme Manager for 26 years made the decision to retire to spend more time with her family, we are extremely grateful for all her hard work and vision for Home-start Dover District over those years. Over several months the team took on extra duties and responsibilities. We have now recruited Ruth, who previously worked as a Family Support Practitioner at Home-Start Dover District and has now transitioned to the manager role. This has allowed Ruth and the staff to continue with the excellent work that has always been provided by Home-start Dover District.

We have had a change in trustees, Graham who had been involved with Home-Start Dover District for many years has resigned due to health issues and we thank him for his support over the years. We have been lucky enough to recruit two new trustees, Carol and Jo who will bring different experiences and skills to the trustee board.

We continue to have social work degree students from the Kent universities, and they are gaining experience working with families that supports their ongoing education throughout their degree program.

The trustee board have been aware of the impact of the changes for volunteers and the staff team and are extremely grateful for all their hard work and the ability of the staff to cope with the extra pressures put upon them during this time.

We look forward to the coming year and prioritize fundraising so that we can continue to provide the excellent service to the families in the Dover District.



Treasurer's Report—Pat Wheeler



At the beginning of the financial year we had a deficit budget of approximately £65,000. During the year we managed to obtain additional funding and donations which resulted in an overall surplus of £2,055 at the end of the financial year.

In April 2023 the Charity was successful with a 3 Year Big Lottery Grant of £287,646 and in July 2023 a 3 year grant of £98,361 was awarded by the Trusthouse Charitable Foundation towards our Embrace Project. We have received a 1 year grant of £20,000 from Garfield Weston and £4,000 from Mrs Smith and Mount Trust, both for the Embrace Project.

In 2023 we received 3 year funding of £30,000 (£10,00 per year) through the Kent Community Foundation to fund the Family Groups. We were also successful with a Lottery Awards For All grant of £18,003 to fund our Family Groups.

We received a 3 year grant of 45,000 (£15,000 per year) from Colyer Fergusson and £5,000 from the Phillip and Connie Foundation to fund our Outreach Project. We have also received funding from SGN to work in partnership with them for 2 years.

We are extremely grateful for all funding and donations received during this financial year and for the coming financial year which will enable us to continue to support many families through our home-visiting support and also through our Outreach Projects and Family Groups.

Total incoming resources for the year saw an increase from £192,435 to £213,319. Total expenditure decreased from £233,522 to £211,264.

The Trustees were able to offer a 5.0% pay increase to staff salaries this year and staff entitled to an 'incremental' rise received this as per their contracts. The Trustees continued to offer a contributory staff pension. We have been able to offer a full service this year and have supported many more families than we are funded for which represents extremely good value for money and a valued support to many families.

Our Core Belief:

Home-Start Dover District believes that children need a happy and secure childhood and that parents play a key role in giving children a good start in life and helping them achieve their full potential.

Our Mission:

Home-Start Dover District offers support, friendship and practical help to parents with young children.

Home-Start Dover District offers a unique service, recruiting and training volunteers – who have parenting experience – to visit families at home and to offer informal, friendly and confidential support.

In addition to this Home-Start Dover District offers services including family groups, Outreach Project and training courses.

To help give children the best possible start in life, Home-Start Dover District supports parents to grow in confidence, strengthen their relationships with children and widen their links with the local community.

Our Vision:

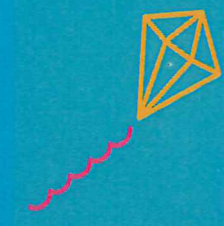
Home-Start Dover District wants to see a society in which every parent has the support they need to give their children the best possible start in life.

Our Values:

Home-Start Dover District's values are the principles that Home-Start holds most dear and through which we work. They are: non-judgmental support, friendship, caring partnership, lightness of touch, trust and respect.

Director/Trustee Members 2024— 2025

Penny Stephens	Chairperson	Specialist
Pat Wheeler	Treasurer / Vice Chair	Independent
Amy Papworth	Specialist	
Graham Hutchison	Specialist—Resigned 2.4.25	
Di Cawsey	Volunteer Representative	
Diana Crossley	Independent	
Sarah Hindle	Independent	
Andrea Rees	Independent	
Paul Gates	Independent—Resigned 2.4.25	
Julia Wood	Independent	



We received funding from:

The Big Lottery; Trusthouse; Garfield Weston; Home-Start UK; Kent Community Foundation; Colyer Fergusson; Social Enterprise Kent; Dover District Council; Co-op

Our Partnerships:

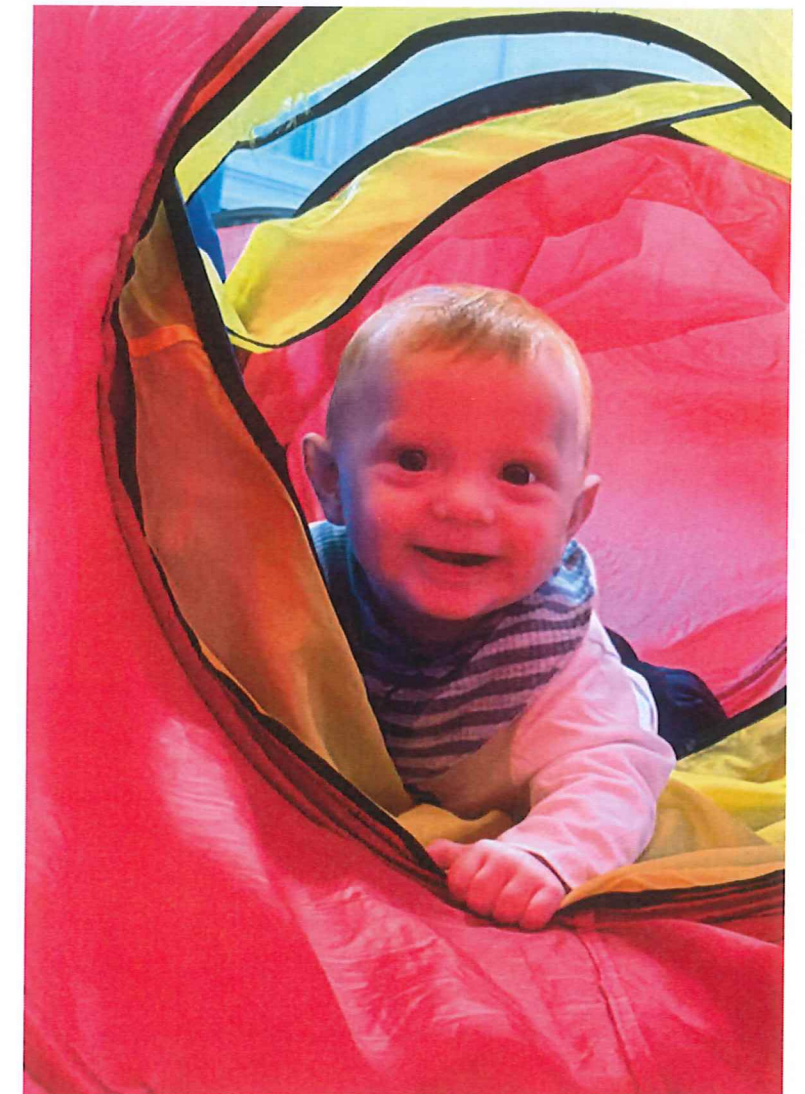
Dover, Deal & Sandwich Children's Centres; Early Help and Preventative Services; Children's Social Work Services Dover; NHS-Eastern & Coastal Kent; Dover & Deal Foodbank; Neighbourly; Dover & District Volunteer Centre; Canterbury Christchurch University; University of Kent

Our thanks to:

Dover Lions; Inkind Direct; Lidl; Project Linus; Danielle Brenchley; KMFM—Give a Gift Christmas Appeal



Dover District



Home-Start Dover District,
The Ark, Noah's Ark Road, Tower Hamlets,
Dover, Kent, CT17 0DD. T/F: 01304 242314.
E: office@homestartdover.org.uk
W: www.homestartdover.org.uk

Bank: Nat West Dover Branch
25 Market Square
Dover Kent
CT16 1XY

Auditors: Xeinadin Audit Ltd
12 Conqueror Ct
Sittingbourne
Kent, ME10 5BH

Charity Registration No. 1102201 Company No. 4974145

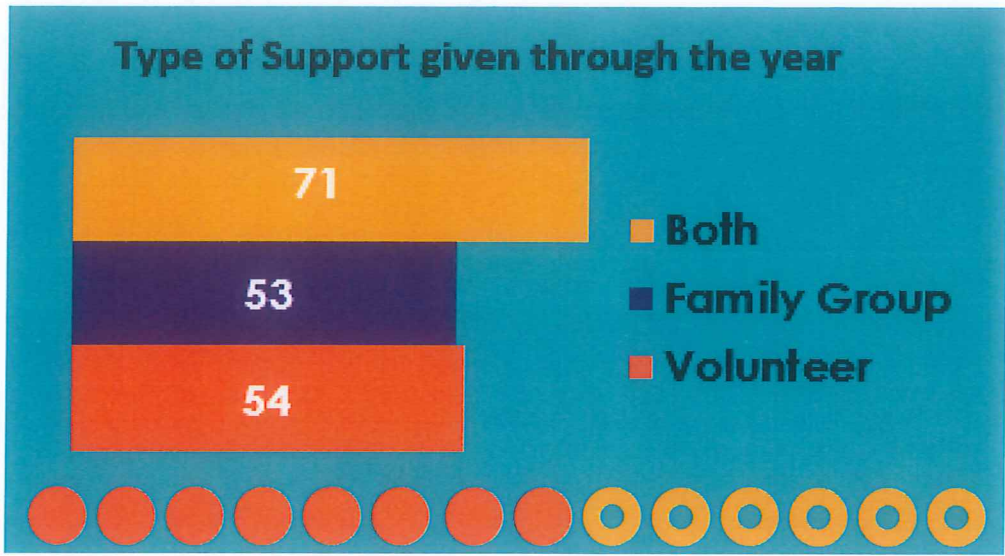


Suzanne, Vicki, Tracy, Lorraine, Ruth, Claire & Rebecca, the dedicated Home-Start Team

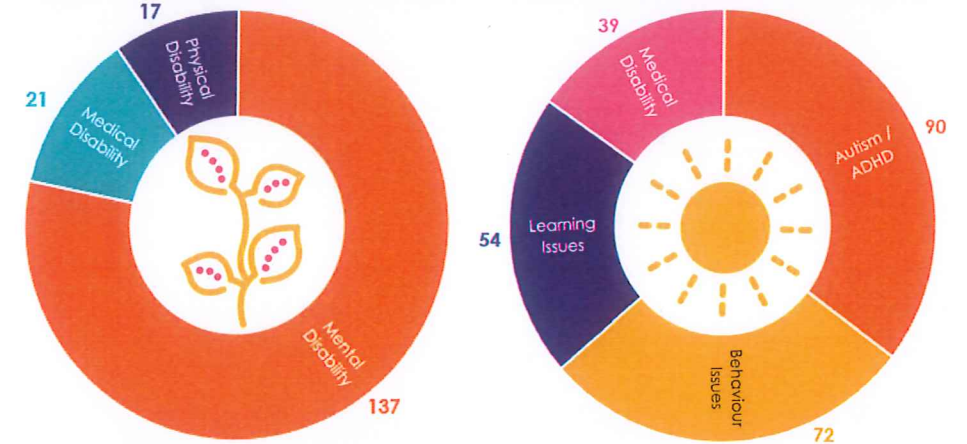
Scheme Manager's Report—Tracy Perrow

Writing this report is bittersweet for me. We have had, as usual a very busy and at times challenging year. Referrals have been constant and Claire and Vicki have been stoic with their visits and providing support for families. The continued cost of living crisis has meant that many families have struggled financially and we have been fortunate to be able to support them through food bank vouchers and providing a healthy breakfast for parents and children once a week at our family groups. Funding for the larger grants remains elusive but we have been successful in obtaining smaller grants from Dover and Deal Town Council and Dover District Council. It is reassuring to know that we are supported locally. We have endeavoured to secure corporate funding from local businesses, but to date this has proved a challenge for us despite working in partnership with other local Home-Start schemes. We also tried to work in partnership with the local family hubs by offering a perinatal infant-well-being service, but sadly this was not taken up by the local authority.

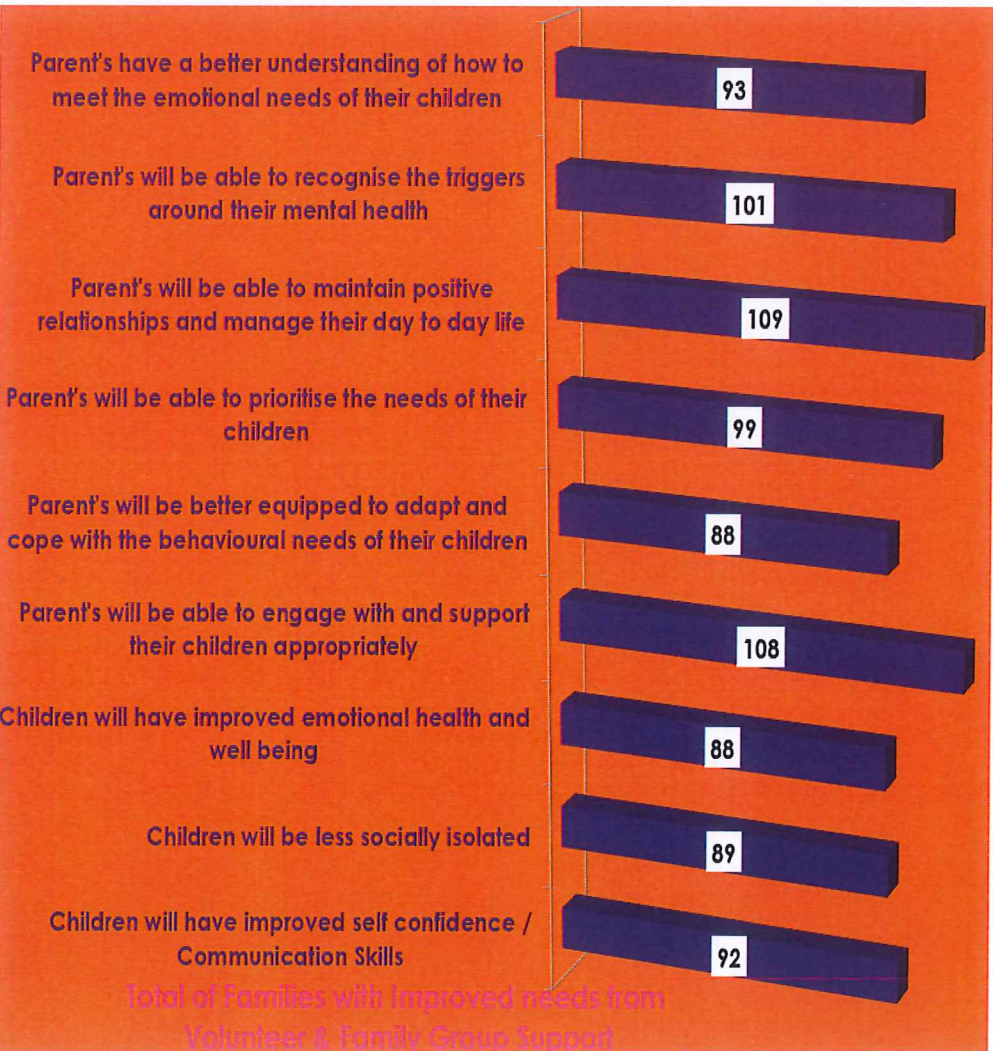
At the end of the year, after much soul-searching, I decided that it was time for me to retire after working 26 years with Home-Start. This was not an easy decision to make but I had to consider the demands of my family which sadly took priority. I will very much miss working with my wonderful colleagues, trustees and volunteers as Home-Start has played a huge part in my life. I know however the determination and dedication of the staff will keep the scheme going over the fourth coming years and I wish them every success in all that they do.



Adults supported with a Disability Children Supported with a Disability



FAMILIES WITH IMPROVED NEEDS FROM VOLUNTEER & FAMILY GROUP SUPPORT



- VOLUNTEERS**
- Vicki A
 - Lyn B
 - Susan B
 - Antony C
 - Christine E
 - Melanie E
 - David F
 - Anne G
 - Julie G
 - Twigy H
 - Chloe H
 - Joan H
 - Denise K
 - Jennifer K
 - Jo M
 - Rachel M
 - Teresa M
 - Sharon O
 - Miriam S
 - Ruth S
 - Carolina S
 - Debbie T
 - Susan W
 - Christine W
- ENDED VOLUNTEERS**
- Katie A
 - Jill C
 - Lynn C
 - Simone C
 - Martelle D
 - Joy H
 - Davina J
 - Jacqueline L
 - Amanda O
 - Anna-Marie O
 - Glyn R



During 2024-2025 our volunteers have offered over 2967 hours of support and friendship to families either through Home-Visiting Support or at our Dover and Deal Family Groups. 178 families were supported during 2024-2025 with 86% of the monitored family support outcomes showing significant improvements. The improvements achieved within the families we support would not be possible without our dedicated team of volunteers. A huge thank you to our 34 amazing volunteers.

Throughout 2024/2025 we supported 178 families and 381 children

Scheme Manager Tracy Retires after 26 Years of Service!
Tracy started work for Home-Start Dover District on 21st September 1998 as an Organiser. The scheme at the time was supporting 58 families per year. Over the years Tracy set up and ran 3 very successful Family Support Groups and progressed to become Scheme Manager in 2012. During Tracy's time at Home-Start we received over 2800 referrals for families needing support. The scheme now supports an average of 180 families and over 300 children per year. Since Tracy became Scheme Manager she has managed to secure in excess of 2.8 million pounds through grants to ensure the continuation of the scheme. Tracy not only supported many families but also worked with, recruited and supported many amazing volunteers and staff members over the years. Tracy's dedication to Home-Start Dover District ensured the overall success of the scheme for over 26 years which is an amazing achievement and appreciated by everyone associated with Home-Start Dover District. Tracy will be very much missed but is wished a very happy and well deserved retirement with her family.

